

# THE XOR'CIST

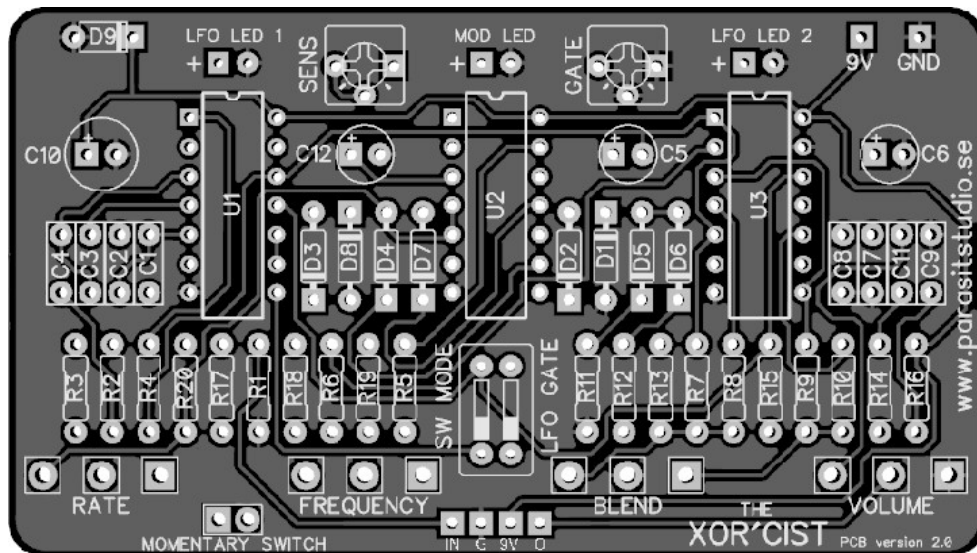
**Build Document last updated june 2017**  
for PCB version 2.0

The Xor'cist is a glitchy and gated fuzz. But it's also a ringmodulator with a squarewave modulation feature.

The modulation can be set to either alternate between fuzz and ringmod sounds or create a choppy type of on/off tremolo/stutter.

It sounds like hell...

Happy building and playing!



## Changelog version 2.0

- Trimmed down and optimized circuit - all switches, except the momentary one, has been removed. Most functions remains, except the 3-way tone selector.
- Input stage redesigned to prevent oscillation issues that some people was having.
- Input trimmer added to set the string sensitivity / balance between gate and sustain.
- Rate LED's are now board-mounted – no need for a special 3PDT daughterboard.
- Dip-switch added to toggle between latching or momentary switch action and gated or free running LFO.
- Redesigned PCB for a easier straight forward build.

## Controls

### Potentiometers

VOLUME – Controls the overall output volume

BLEND – Blends between straight fuzz and ringmodulation

*The blend pot goes from stutter fuzz (CCW) to alternating between fuzz and ringmod, to stuttering ringmod (CW) when the modulation is active*

FREQUENCY – Sets the carrier frequency of the ringmodulation

RATE – Controls the speed of the squarewave modulation

### Switches

FOOTSWITCH – This is a momentary footswitch that toggles the stutter on or off.

*The footswitch action can be either momentary or latching, depending on the board-mounted dip-switch*

## General builds tips

- Solder the low profile components first, from short to tall height. Recommended order: resistors, diodes, IC socket, film-caps, electrolytics, pots and switches
- CMOS chips are very sensitive to static charges and can be easily damaged. It's a good idea to wear an anti-static wristband or at least avoid wearing a wool jumper and petting your cat/dog while building...
- Always use sockets for IC chips and transistors to avoid heating them directly. It also makes it much easier to swap them out if needed.
- Pay special attention to the orientation of the diodes and electrolytics.
- **There are a LOT of switches and pots on this PCB. Be sure to place them in the PCB without soldering first, THEN place them in your drilled enclosure. Gently tighten the nuts to the enclosure, then solder LAST. Otherwise, it will be really hard to get this in your enclosure.**
- This PCB's is designed for 16mm Alpha PCB mounted angled pots. You could also use solder lug type and just tack some "legs" with short pieces of wire to each pot to mimic a PCB mount type.
- The pots are meant to be mounted on the bottom (solder side) of the board, and soldered on the top (component side).
- The square pad represents pin 1 of each pot.

## Wiring

The only thing that needs to be wired offboard (except the usual jacks and bypass switch) is the momentary switch. Since it's a momentary SPST switch, which connection goes to which lug on the switch doesn't matter.

*Please note: If you are using the Parasit Studio 3PDT-board, you only need to connect your DC jack to either the 9V and GND connections on the main board or on the 3PDT-board, not to both.*

For more info on how to wire up the bypass stomp switch, jacks ect, please visit the Parasit Studio website and download the PDF called "offboard wiring". You can find it here:

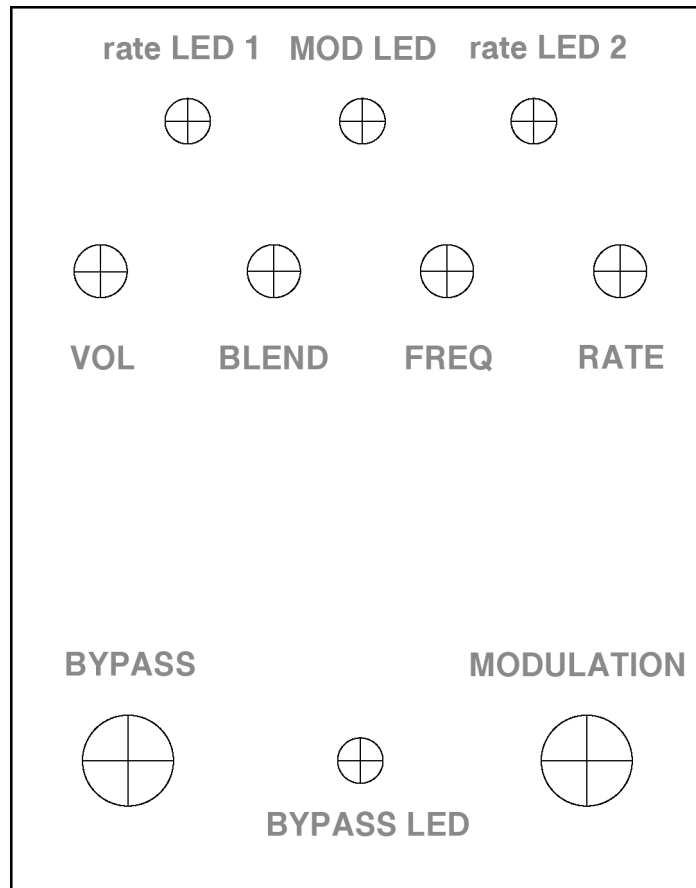
<http://www.parasitstudio.se/build-docs.html>

## The XOR'CIST Bill Of Materials (BOM)

<b>Resistors</b>				<b>IC's</b>	
R1	1M	R19	15K*	U1	CD4069UBE
R2	1M	R20	15K*	U2	CD40106BE
R3	1M	<b>Capacitors</b>		U3	CD4070BE
R4	1M			<b>Potentiometers</b>	
R5	15K	C1	100nF	VOLUME	A100K
R6	10K	C2	2.2nF	BLEND	B50K
R7	100K	C3	4.7nF	FREQUENCY	B50K
R8	100K	C4	100nF	RATE	C50K
R9	100K	C5	2.2uF	Gate trim trimpot	100K
R10	100K	C6	1uF	Sensivity trimpot	200K
R11	1M	C7	100nF	<b>Switches</b>	
R12	1M	C8	100nF	Momentary SPST footswitch	
R13	47K	C9	100uF	DIP-switch: 2 positions	
R14	47K	C10	100nF	(2 switches, 4 pins)	
R15	100K	C11	33uF	<b>Diodes</b>	
R16	1M	C12		D1-D8	1N4148
R17	3.9K			D9	1N4001
R18	15K*			3x LED's	

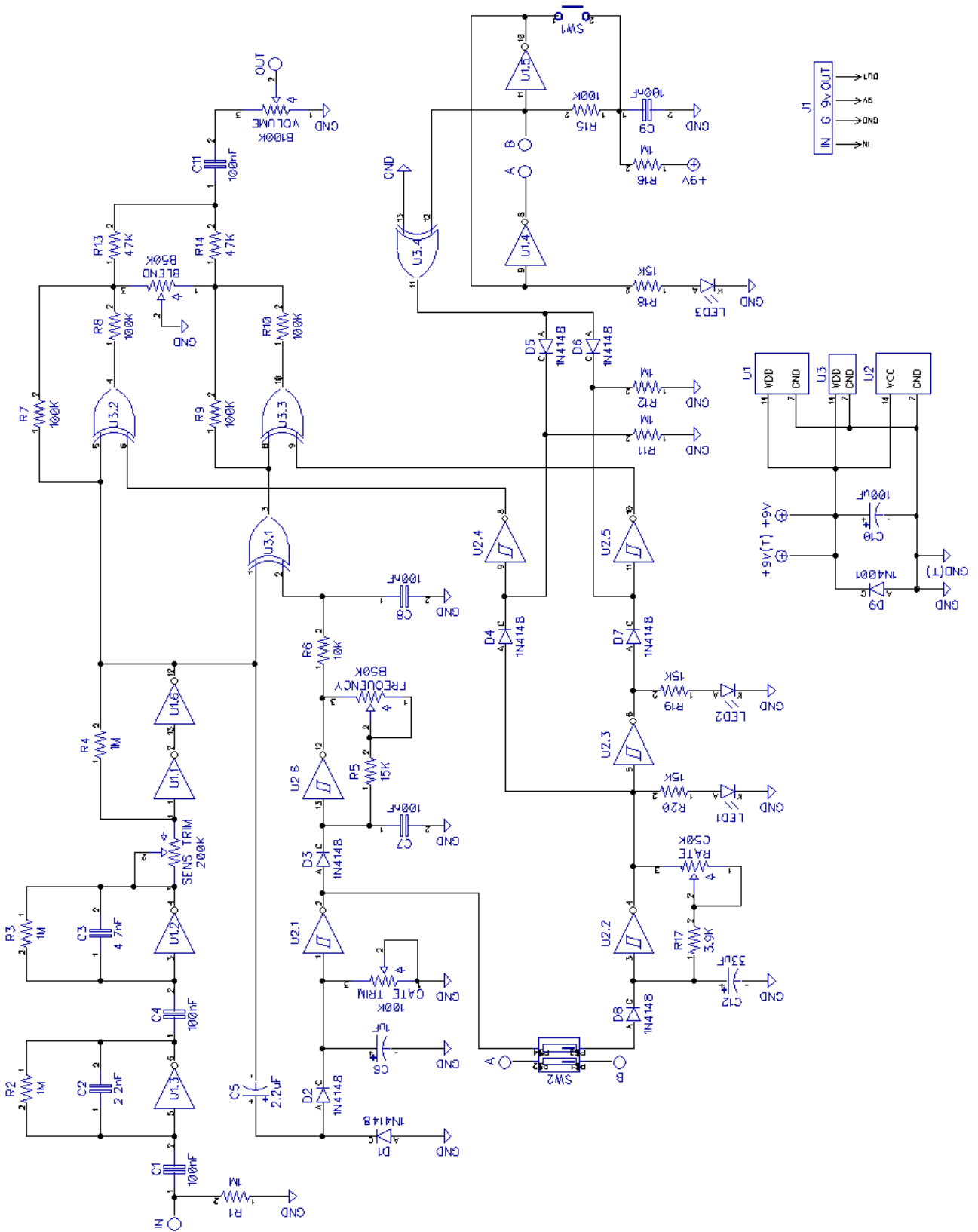
- \* These are current limiting resistors for the rate indicator LED's and the modulation indicator LED. Use the appropriate value for your LED type. I use 15K resistors in my fully assembled builds (with superbright LED's).
- The gate trimpot sets the decay of the ringmodulation carrier frequency gate. Set the blend fully clockwise and adjust the trimmer to match the sustain of short notes.
- The sens trimpot sets the input string sensitivity and a balance between gate and sustain.
- The DIP switch has two functions. It can toggle on/off the LFO gate and set the momentary switch action as either latching or momentary.
- **Not included in the BOM:**
  - 1x bypass LED
  - 1x CLR (current limiting resistor) for the bypass LED
  - Also not included in the BOM but also good to have: enclosure, input and output jacks, LED bezels, DC jack, 3PDT bypass switch, knobs.

## Drilling template (1590BB)



- Use at your own risk! This template is approximate.
- Make sure your printer isn't doing any scaling / is set to 100% print size.
- Drill footswitch, rec and play switches, DC jack and input/output jacks to your own preference. There is room for the DC jack at the top side.
- Bypass LED hole is only a suggestion (need to be wired offboard)
- **Measure and confirm before drilling!**

# Schematic



## **Troubleshooting**

There's always a chance of running into trouble. To minimize error, follow the BOM and general building tips carefully. Take your time and don't rush. Take a break now and then. Use good solder, and it helps to have a decent soldering station instead of a cheap iron.

If you are still having trouble, please visit the madbean forum Parasit Studio subforum section and ask for help there.

<http://www.madbeanpedals.com/forum/index.php?board=84.0>

If you have bought the Musikding kit and have received a faulty or missing component, please contact musikding directly.

<https://www.musikding.de/kontakt.php?lang=eng>

## **Terms of use**

PCB's from Parasit Studio are intended for DIY use only. Commercial resale is not allowed. It's meant for personal use, which means that it's not allowed to build a lot of pedals and sell them for profit to strangers using public forums and craigslist ads. However, it's totally ok to build a few pedals and sell to your friends and bandmates. After all, that's what this hobby is about. DIY or DIE!

[www.parasitstudio.se](http://www.parasitstudio.se)  
**parasitstudio@gmail.com**