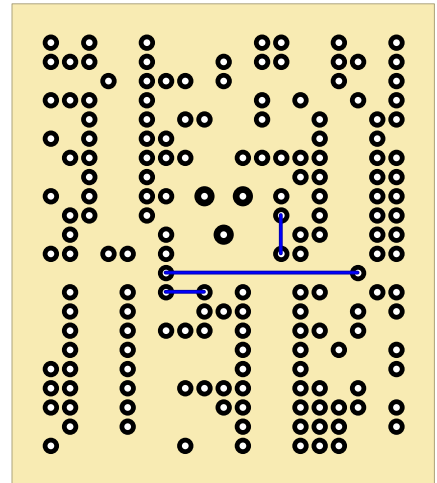
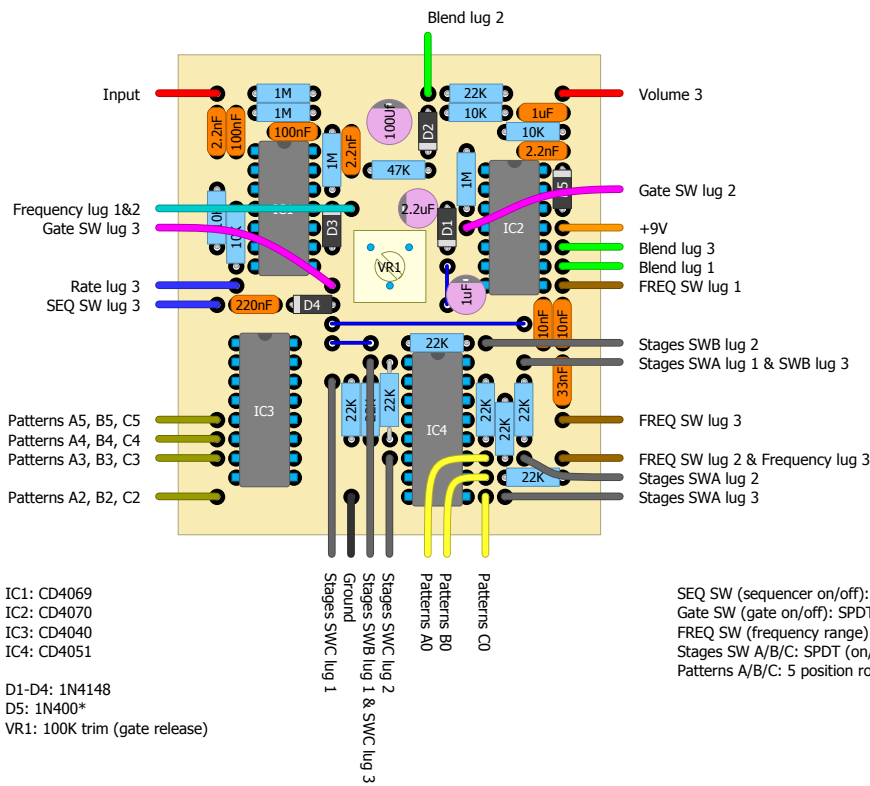
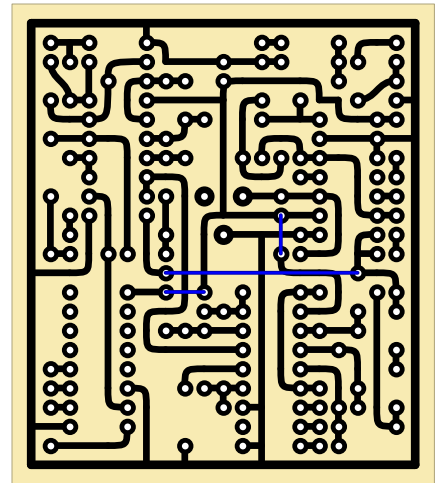
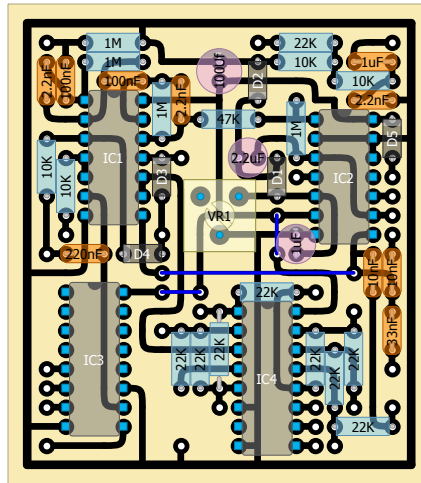
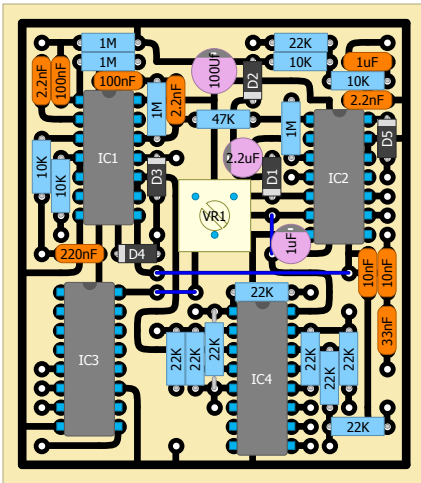


KING CORRUPTOR

RINGMOD SEQUENCER

by F. Lyxzén
www.parasitstudio.se



Frequency: C50K
Rate: B1M
Blend: B20K
Volume: A100K

Patterns lugs A1/B1/C1 to +9V
SEQ SW lug 2 to Rate 1&2
Volume 1 to ground
Volume 2 to output

